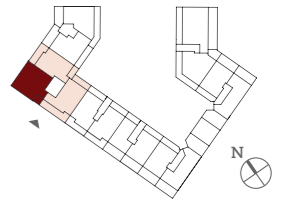
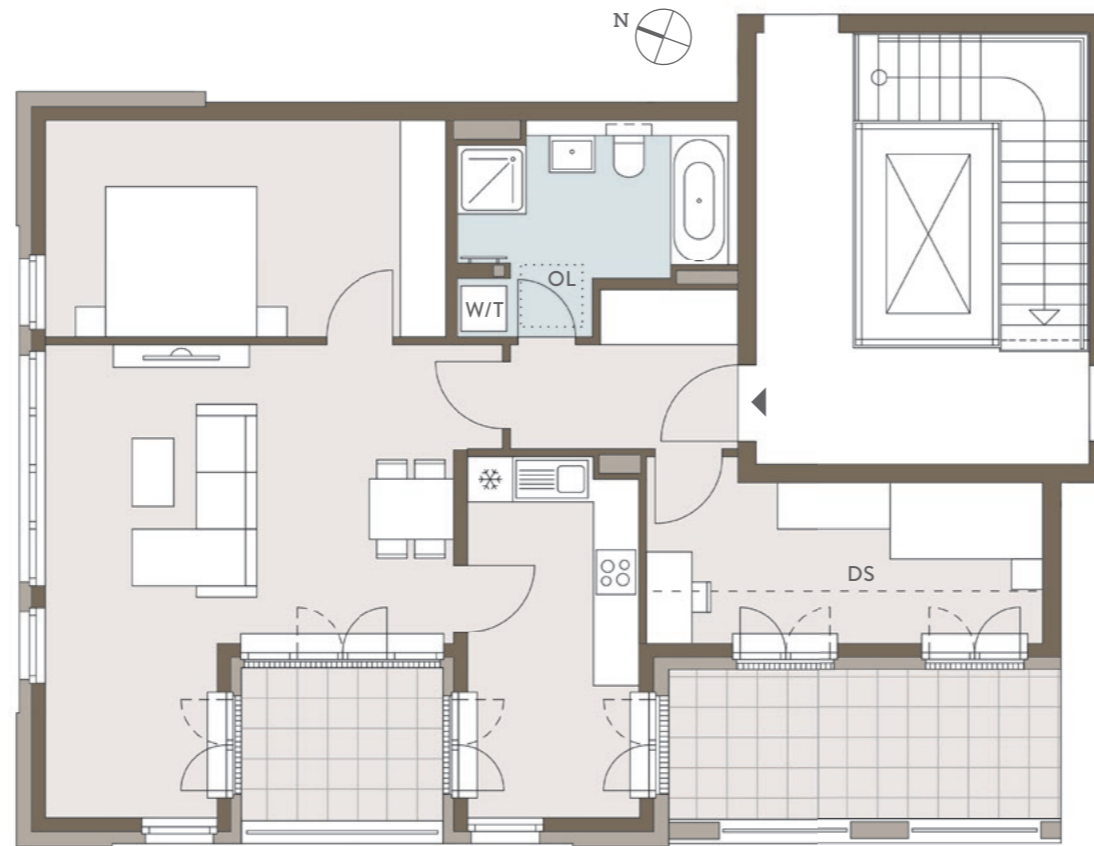


C9.20



Penthouse, 6. OG, Mitte · 3-Zimmer-Wohnung / Penthouse, 6th floor, centre · Apartment with 3 rooms



	qm / sqm	
Wohnen, Essen / Living room, dining room	27,29	
Schlafen / Bedroom	15,14	
Zimmer / Room	11,41	
Küche / Kitchen	10,51	
Diele / Hallway	4,12	
AF, Garderobe / SS, wardrobe	1,31	
Bad / Bathroom	8,49	
Summe / Total	78,27	
Loggia / Recessed balcony	5,70	2,85
Dachterrasse / Roof terrace	10,40	5,20
Gesamtfläche / Total area	86,32	

Die Dachterrasse wird zu 50% angerechnet.
50% of the roof terrace is included.

Die angegebenen Flächen basieren auf Fertigmaßen.
Loggien, Balkone und Terrassen werden zu 50%
angerechnet.

The floorspace figures stated are based on finished
measurements. 50% of balconies, recessed balconies
and terraces are included.

- SNU / SRU **Sondernutzungsrecht /** Special right of use
- HWR / UR **Hauswirtschaftsraum /** Utility room
- AR / SR **Abstellraum /** Storage room
- AF / SS **Abstellfläche /** Storage space
- W **Waschmaschine /** Washing machine
- T **Trockner /** Dryer
- OL **Oberlichter /** Skylights
- DS **Deckensprung /** Split-level ceiling

