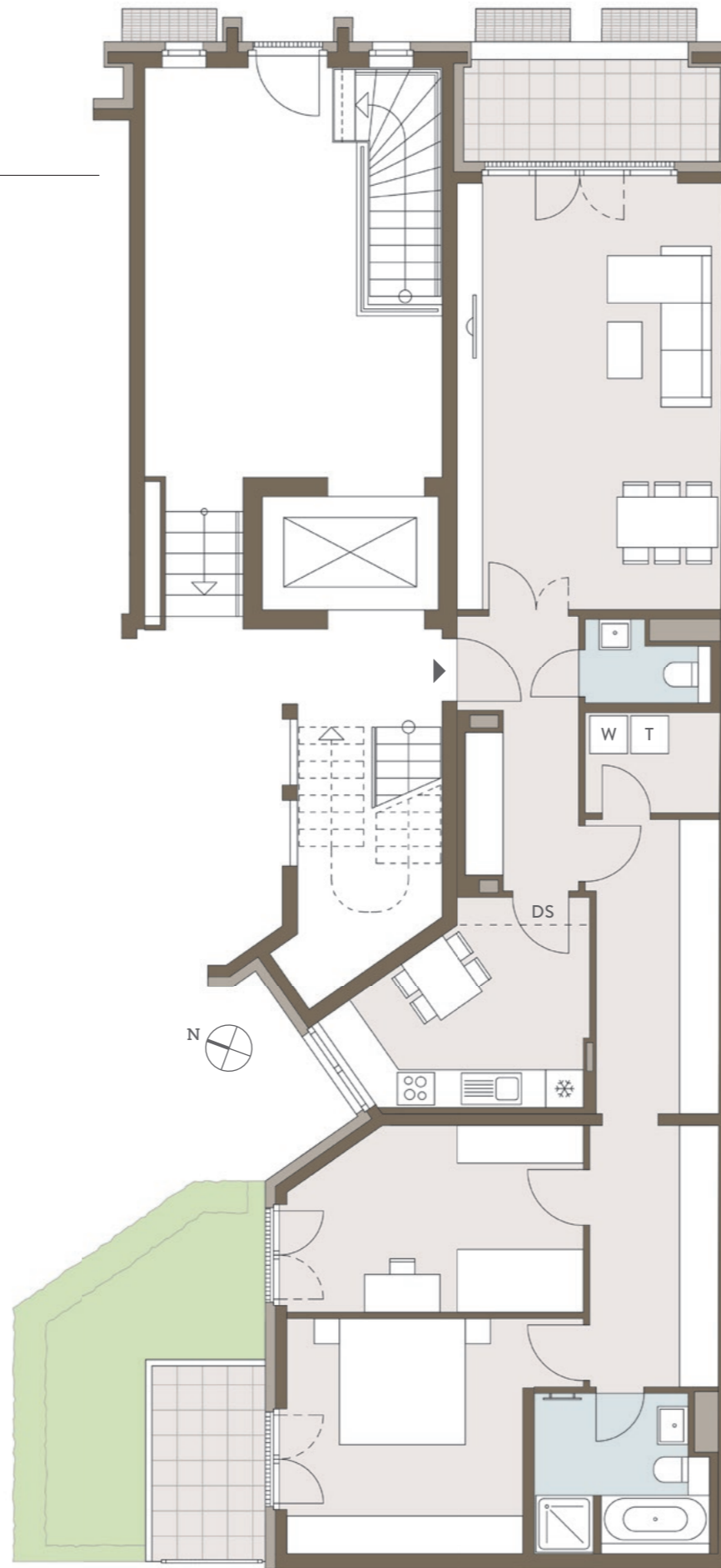
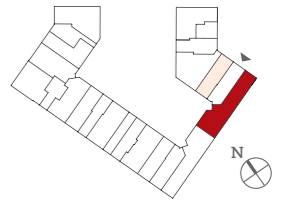


C5.2

Erdgeschoss, links · 3-Zimmer-Wohnung / Ground floor, left · Apartment with 3 rooms



| | qm / sqm | |
|--|---------------|------|
| Wohnen / Living room | 28,55 | |
| Schlafen / Bedroom | 15,09 | |
| Zimmer / Room | 13,06 | |
| Küche, Essen / Kitchen, dining room | 10,71 | |
| Diele / Hallway | 6,32 | |
| Flur 1 / Corridor 1 | 6,38 | |
| Flur 2 / Corridor 2 | 5,89 | |
| Garderobe / Wardrobe | 1,36 | |
| HWR, AR / UR, SR | 3,39 | |
| AF 1 / SS 1 | 2,80 | |
| AF 2 / SS 2 | 2,48 | |
| Bad / Bathroom | 6,33 | |
| WC / WC | 2,24 | |
| Summe / Total | 104,60 | |
| Loggia / Recessed balcony | 6,73 | 3,37 |
| Terrasse / Terrace | 6,19 | 3,10 |
| Gesamtfläche / Total area | 111,07 | |
| Garten (SNR) / Garden (SRU) | 21,30 | |

Die angegebenen Flächen basieren auf Fertigmaßen.
Loggien, Balkone und Terrassen werden zu 50%
angerechnet.

The floorspace figures stated are based on finished
measurements. 50% of balconies, recessed balconies
and terraces are included.

- SNU / SRU **Sondernutzungsrecht / Special right of use**
- HWR / UR **Hauswirtschaftsraum / Utility room**
- AR / SR **Abstellraum / Storage room**
- AF / SS **Abstellfläche / Storage space**
- W **Waschmaschine / Washing machine**
- T **Trockner / Dryer**
- OL **Oberlichter / Skylights**
- DS **Deckensprung / Split-level ceiling**

