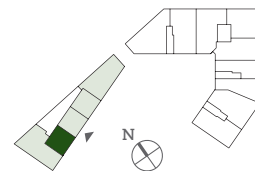
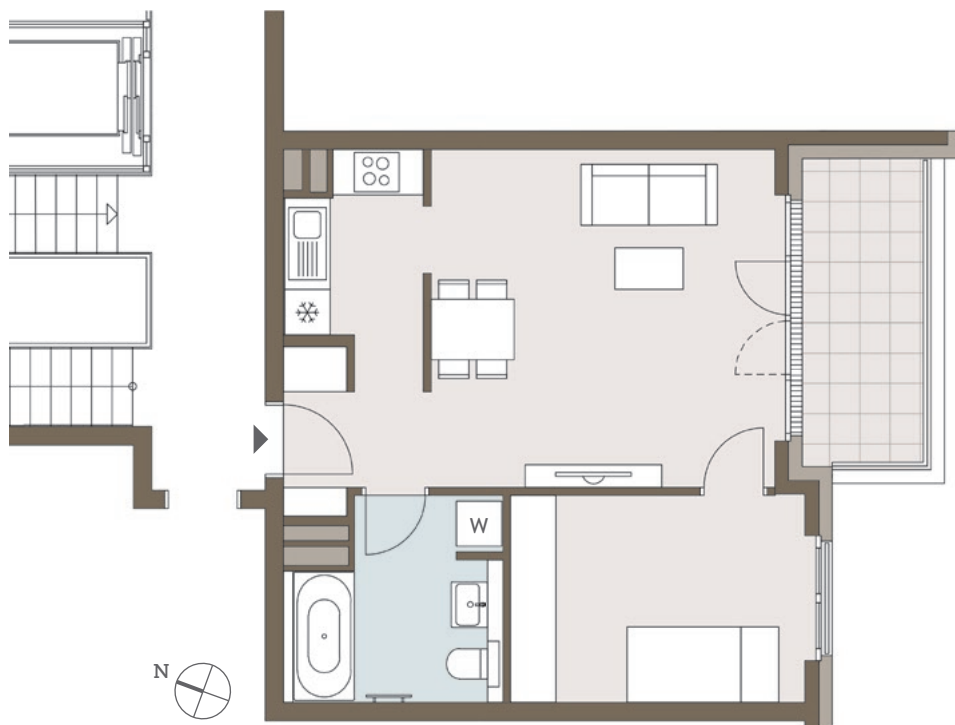


D5.9



2. OG, Mitte, links · 2-Zimmer-Wohnung / 2nd floor, centre, left · Apartment with 2 rooms

| | qm / sqm | |
|---|----------|------|
| Wohnen, Essen / Living room, dining room | 20,64 | |
| Schlafen / Bedroom | 10,79 | |
| Bad / Bathroom | 6,62 | |
| Küche / Kitchen | 4,76 | |
| Entree / Entrance | 2,45 | |
| AF / SS | 0,31 | |
| Garderobe / Wardrobe | 0,49 | |
| Summe / Total | 46,06 | |
| Balkon / Balcony | 6,91 | 3,46 |
| Gesamtfläche / Total area | 49,52 | |



Die angegebenen Flächen basieren auf Fertigmaßen.
Loggien, Balkone und Terrassen werden zu 50%
angerechnet.

The floorspace figures stated are based on finished
measurements. 50% of balconies, recessed balconies
and terraces are included.

| | |
|-----------|--|
| SNU / SRU | Sondernutzungsrecht / Special right of use |
| HWR / UR | Hauswirtschaftsraum / Utility room |
| AR / SR | Abstellraum / Storage room |
| AF / SS | Abstellfläche / Storage space |
| W | Waschmaschine / Washing machine |
| T | Trockner / Dryer |

