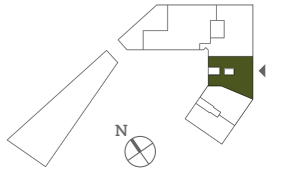
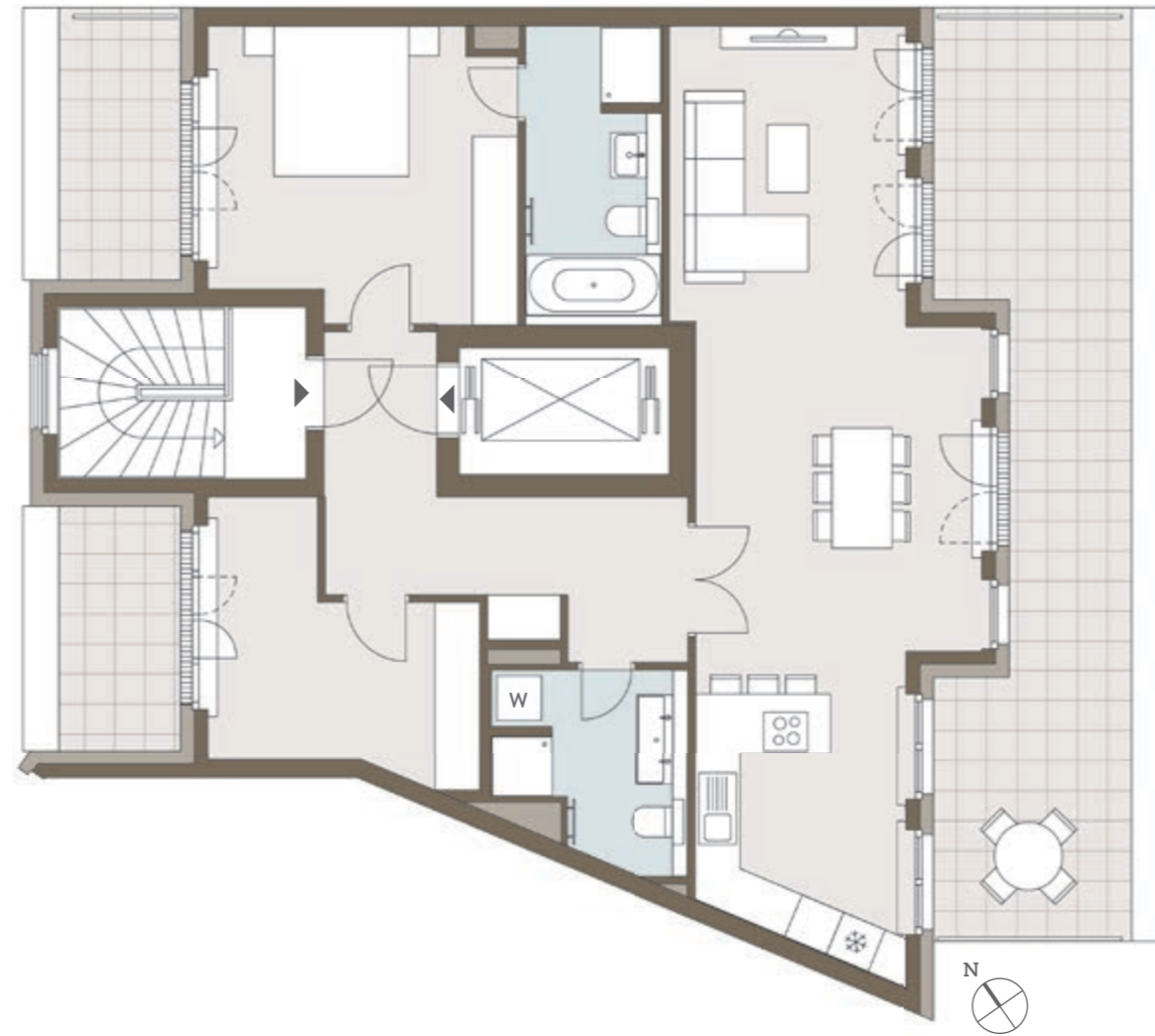


D3.12



Penthouse, 6. OG · 3-Zimmer-Wohnung / Penthouse, 6th floor · Apartment with 3 rooms



	qm / sqm	
Wohnen, Essen / Living room, dining room	31,41	
Schlafen / Bedroom	15,57	
Zimmer / Room	10,32	
Bad 1 / Bathroom 1	6,89	
Bad 2 / Bathroom 2	5,67	
Küche / Kitchen	9,68	
Entree / Entrance	5,17	
Diele / Hallway	5,76	
Garderobe / Wardrobe	0,59	
Summe / Total	91,06	
Dachterrasse 1 / Roof terrace 1	26,62	13,31
Dachterrasse 2 / Roof terrace 2	5,37	2,69
Dachterrasse 3 / Roof terrace 3	5,70	2,85
Gesamtfläche / Total area	109,91	

Die angegebenen Flächen basieren auf Fertigmaßen. Loggien, Balkone, Terrassen und Dachterrassen werden zu 50% angerechnet.

The floorspace figures stated are based on finished measurements. 50% of balconies, recessed balconies, terraces and roof terraces are included.

Dachterrassen 1, 2 und 3 werden jeweils zu 50% angerechnet.

Includes 50% of roof terraces 1, 2 and 3 respectively.

- SNU / SRU Sondernutzungsrecht / Special right of use
- HWR / UR Hauswirtschaftsraum / Utility room
- AR / SR Abstellraum / Storage room
- AF / SS Abstellfläche / Storage space
- W Waschmaschine / Washing machine
- T Trockner / Dryer

